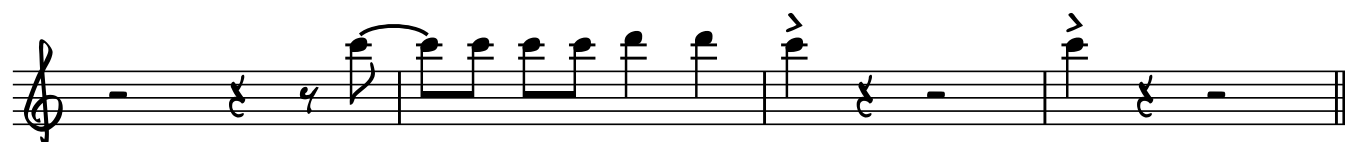
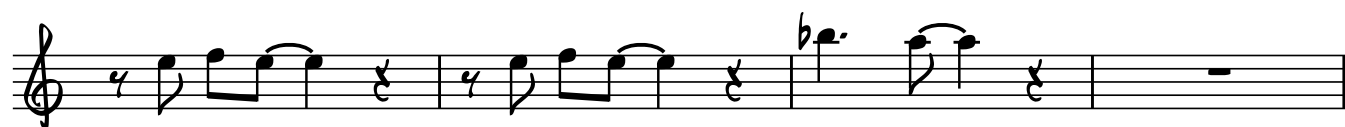


PART 3 TENOR

Crazy Little Thing Called Love

Freddie Mercury
arr MB for JJO

Rockabilly Shuffle ♩ = 150



Sheet music for Part 3 Tenor, page 2. The music is written in treble clef with a key signature of one sharp (F#). The tempo is marked *mf* (mezzo-forte) and the dynamics range from *mf* to *f* (forte).

The music is divided into measures by bar lines. Chord symbols (D, E, F, G, H) are placed above the staff to indicate the harmonic structure. The notation includes various note values (quarter, eighth, and sixteenth notes), rests, and articulation marks (accents, slurs, and breath marks).

The first system (measures 1-4) begins with a **(D)** chord and features a melodic line with eighth and quarter notes, followed by a rest. The second system (measures 5-8) continues the melodic line, with a **(E)** chord appearing in measure 6. The third system (measures 9-12) includes slurs and accents, with a **(F)** chord in measure 10. The fourth system (measures 13-16) features a **(G)** chord in measure 13 and a **(H)** chord in measure 15. The fifth system (measures 17-20) concludes the piece with a final melodic phrase and a double bar line.